

# LEVELS

Training Tables with Tucana Bases



## FEATURES:

- Tops are available in all standard **HDL** Levels Series finishes
- Metal on metal insert nut connection between top & base
- Durable, 1" commercial grade laminate construction with matching 2mm edge band
- Two sizes - 24" deep & 30" deep training tables
- 30" deep tables include center grommet
- Metal bases feature a perforated, metal modesty panel with built-in cable management and heavy-duty locking casters
- Attractive metallic silver base finish
- Maximum weight capacity - 220 lbs (top not included)



CONNECT TABLES



LEVER FLIP TOP



NESTING



OPTIONAL CPU HOLDER



## AVAILABLE MODELS

### 24" FLIP TOP TRAINING TABLES



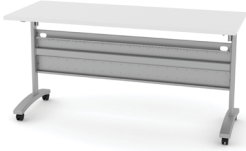
**LEV-2436TBL-TU24**  
35.5w x 23.75d x 29h



**LEV-2442TBL-TU54**  
41.5w x 23.75d x 29h



**LEV-2448TBL-TU54**  
47.25w x 23.75d x 29h



**LEV-2460TBL-TU72**  
59.25w x 23.75d x 29h



**LEV-2472TBL-TU72**  
71w x 23.75d x 29h

### 30" FLIP TOP TRAINING TABLES



**LEV-3060TBL-TU72**  
59.25w x 29.5d x 29h



**LEV-3072TBL-TU72**  
71w x 29.5d x 29h

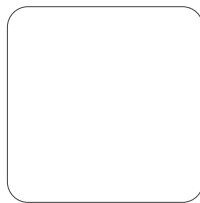
## AVAILABLE FINISHES



Black Walnut  
BW



Grey Dusk  
GD



Pure White  
PW



Winter Wood  
WW

## DEFAULT GROMMETS

Grey Dusk & Black Walnut - Black grommets  
Winter Wood & Pure White - Grey Grommets



**HEARTWOOD DISTRIBUTORS LTD.**  
251 ADAMS RD, KELOWNA, BC  
T 1 800 567 3060 F 250 765 1213  
[www.heartwooddl.com](http://www.heartwooddl.com)

Contact your local dealer:

## LIMITED LIFETIME WARRANTY



HDL is pleased to offer a limited lifetime warranty on all laminate products. For specific series warranty details, please refer to the downloadable Limited Lifetime Warranty document online.

## THE IN-STOCK ADVANTAGE



HDL is committed to maintaining stock at all times. Every effort will be made to ensure these products are available.

## Eco STORY



HDL is committed to supplying office furniture products in an environmentally responsible manner. We are proud to partner with like-minded corporate citizens who align environmental stewardship with their company's core values and goals. Innovations is produced with CARB certified laminate